

TiRAY

2-Way, Ultra-Compact
Line Array System



The TiRAY is an ultra-compact, full-range two-way line array module, designed for small venues where high fidelity sound and outstanding intelligibility are required.

The TiRAY benefits from pioneering CODA Audio technologies. The line array module contains two 5" neodymium cone drivers that exhibit high efficiency and ultra-low distortion. At the center of TiRAY line array modules is a single-diaphragm neodymium planar wavedriver similar to the wavedrivers found in the larger AiRAY and ViRAY systems.

The TiRAY is highly efficient and provides 100-degree dispersion and linear phase response. TiRAY can be flown in arrays of up to 24 modules, to create a scalable system fit for a variety of small and medium-sized venues.

With optional adapters, TiRAY modules can be pole-mounted to the TiLOW bass extension module to create a compact and powerful system that requires minimal set-up time and transport cost.

The TiRAY is a fully-integrated sound reinforcement system including LINUS loudspeaker management amplifiers for DSP control, amplification, audio I/O routing, network remote control, and diagnostics. The touring package contains transport dollies, rigging accessories, protection covers, and more, significantly reducing set-up time.

The TiLOW 12" bass extension overlaps the low range of TiRAY and paired subwoofers, enhancing the low frequency headroom and increasing the long-throw capability of the system. The G15-SUB compact subwoofer provides an extension down to 38 Hz.

TiRAY Features

- ⊕ Ultra-compact size
- ⊕ Unique neodymium planar wavedriver
- ⊕ Wide horizontal coverage of 100° and vertical splay up to 12°
- ⊕ Integrated rigging for flown or ground-stacked arrays compatible with TiLOW bass extension module
- ⊕ Multiplex enclosure with polyurea coating for extreme durability and water protection
- ⊕ CUTI and CUTI-SF adapters allow ground-stacked pole-mounted TiRAY arrays with a TiLOW base

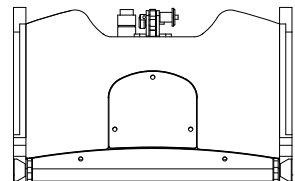
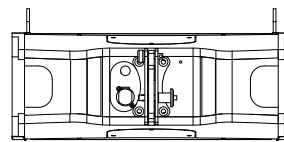
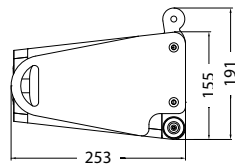
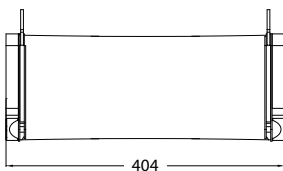


TiRAY Data Sheet



Product Type	Ultra compact 2-way full range system
Dimensions (WxHxD):	404 x 155 x 253 mm / 15.91 x 6.10 x 9.96"
Dimensions Including Hardware (WxHxD):	404 x 191 x 253 mm / 15.91 x 7.51 x 9.96"
Net Weight	9.9 kg / 21.83 lb
Frequency Response	70 Hz – 20 kHz (-6 dB)
Power handling AES / peak (passive):	300 W / 1200 W
- Low AES / peak:	124 dB
- Mid / High AES / peak:	139 dB
Max. peak SPL (with LINUS10):*	139 dB
Dispersion Horizontal:	100°
Dispersion Vertical:	Array dependent: 0°-12° (in steps 0°, 1°, 3°, 5°, 7°, 9°, 12°)
Components Low frequency:	2x5" woofer, 1.5" (38 mm) VC, 150 W (AES) each
Components Mid/High frequency:	5" Nd Planar-wave-driver Hi: 1.75" (44.4mm) VC, 80 W (AES)
Crossover point:	950 Hz passive
Input Connectors:	2x Neutrik™: 1x Input + 1x Link Cable
Nominal impedance LF / MF+HF:	8 Ω (+2/-2)
Enclosure material:	Birch plywood
Suspension	Flying hardware integrated

*Measured with pink noise 6 dB crest factor. Half-space loading.



Other TiRAY System Products



TiLOW Line Array
Ultra Compact Bass Extension
for TiRAY



G15-SUB
Compact, High-
Output Subwoofer



LINUS10-C
4 Channel Loudspeaker
Management Amplifier

CODA AUDIO GmbH

Boulevard der EU 6, 30539 Hannover, Expo Park, Germany
E-Mail: contact@codaaudio.com Website: www.codaaudio.com

CODA
CODA AUDIO

